

# Luther Heights COVID Response

## COVID FAQs

FAQs will be updated as each new guidance arrives from Government Health Authorities

### Are you open and hosting school camps?

**Yes, we are!! Praise God!**

Luther Heights is operating under the Outdoor Education Providers COVID Industry Plan, which has been reviewed and approved by the Chief Health Officer, Queensland Government.

The Education Queensland COVID-19 Updated Guidelines for Schools (19th June 2020) allows "Excursions and camps are permitted to be held at locations or businesses that have approved COVID Safe Industry Plans." As stated above – Luther Heights is operating under an approved COVID Safe Industry Plan. Which means – Schools have permission from Ed Qld to attend Luther Heights!!

Luther Heights has its own COVID 19 Operations Plan with outlines exactly how are keeping you, our campers and our team safe.

All document can be found at <http://lutherheights.org.au/covidsafe/>

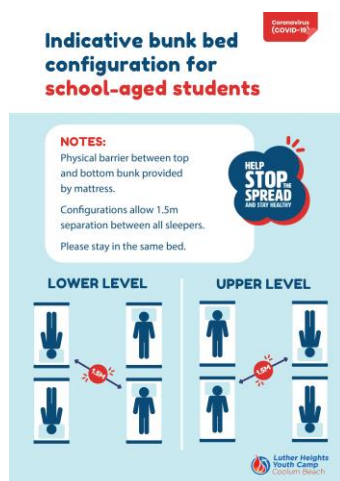
### How will social / physical distancing work at Luther Heights?

#### School Aged Children

The Australian Health Protection Principal Committee (AHPPC) has provided guidance that physical distancing (i.e. 4sqm per person in an enclosed space) is not required for school-aged students. The Outdoor Education Industry Plan allows for school aged children from the same client group to exceed the base density of one person per four-square metres, encouraging physical distancing protocols where possible.

This direction applies to school-aged children in accommodation, dining, and bathroom facilities. Luther Heights is encouraging all school aged children to arrange their sleeping arrangements as per the figure 1. Posters showing the ideal sleeping arrangement are placed throughout the accommodation at Luther Heights.

Figure 1.



# Luther Heights COVID Response

## Adults

Adults staying at Luther Heights are required to social distance at all times. To assist with this Luther Heights has a poster on the entry to each room indicating how many adults can be accommodated while adhering to the density requirements outlined by the Queensland Roadmap to recovery. See figure 2.

Figure 2.



## How do we know Luther Heights is following the COVID safe industry plan?

There are a number of ways you can be sure Luther Heights is following the COVID safe industry plan:

1. The Luther Heights COVID 19 Operations Plan is a direct response to the COVID safe industry plan. This document outlines how Luther Heights is complying to the plan in order to keep everybody safe.
2. The signed Statement of Compliance. This document states that the management of Luther Heights is complying with the Public Health Directions of the Qld Government. Figure 3.

Figure 3.



# Luther Heights COVID Response

## What are the main restrictions Luther Heights must follow under the COVID safe industry plan?

There are many requirements specified within the Industry Plan and so we recommend you read it in full, however here are some of the headlines:

- Group size is limited to 100 people (includes students, leaders and teachers).
- Records of everyone attending camp must be kept for 56 days.
- Anyone who is not well is not permitted to come to camp.
- For School aged children social distancing is not required in accommodation, dining and activities but should be adhered to where possible.
- Luther Heights will be encouraging everyone to wash or sanitise their hands A LOT!
- Luther Heights can send anyone with COVID symptoms, home at any stage.
- On top of the already rigorous cleaning done at Luther Heights, there will be extra cleans performed on high touch surfaces.
- Most lunches will be packed!
- Hand santiser is EVERYWHERE!! (plus we ask you to bring your own.)
- There are lots of signs around; encouraging Social distancing, correct handwashing, number of adults permitted per room, do not share (figure 4.), and preferred sleeping arrangements.

Figure 4.



## Are you taking bookings?

Yes, Luther Heights is taking bookings and as always; EVERYONE is Welcome!

## Does Dave still work there?

Yes, Dave our long servicing Site Manager is still working day in and day out at Luther Heights.

Dave is one of over 50 people who make Luther Heights the safe and fun place you have come to know and love. The whole team is here to help your stay be the highlight of your year.